

ASSEMBLY INSTRUCTION

WALL MICROWAVE CABINET

Part	Descriptions	Qty	Part	Description	Qty	Part	Description	Qty
A	Face-frame with Door	1	E	Glue (not included)	1	I	L-ShapedSteel	8
B	Side Panel	2	F	Screw $\phi 3.5 \times 30$	4	J	Screw $\phi 3.5 \times 12$	16
C	Top And Bottom	2	G	Back Panel	1			
D	Shelf	1	H	Screw $\phi 3.5 \times 25$	8			

This instructions applies to the following items: **MC3018**.



** Wood glue are required for assembly. Wood glue applied to each notching area for stability (wood glue not included)**

STEP 1: Add a Bead of Glue to the Face Frame and each notching area needed.

STEP 2: Slide-in the Sides to the Frame.

STEP 3: Slide-in the Top and Bottom.

STEP 4: Slide-in the Back to the Cabinet Box.

STEP 5: Secure the Corners of the Box by using the L-Shaped Steel.

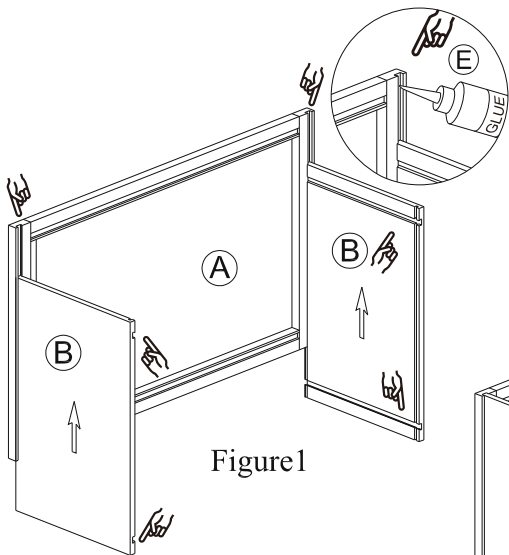


Figure1

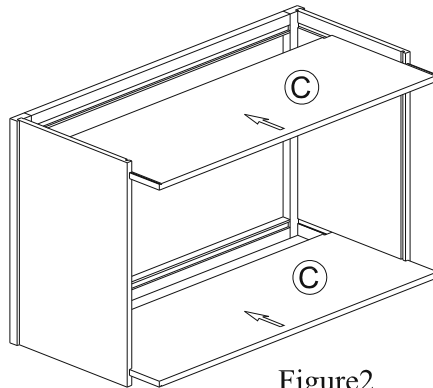


Figure2

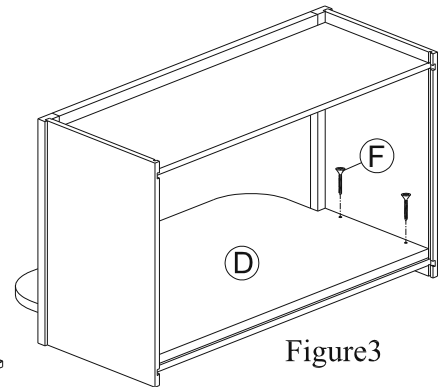


Figure3

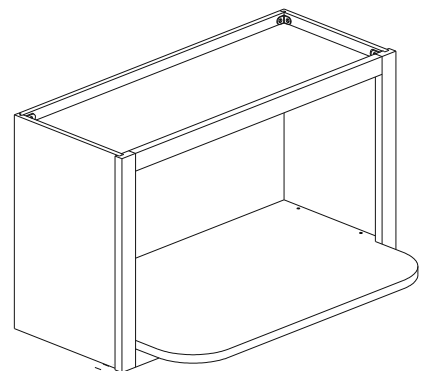


Figure4

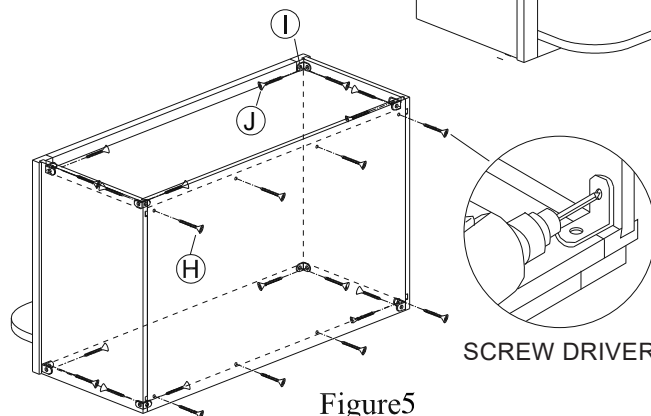


Figure5

SCREW DRIVER